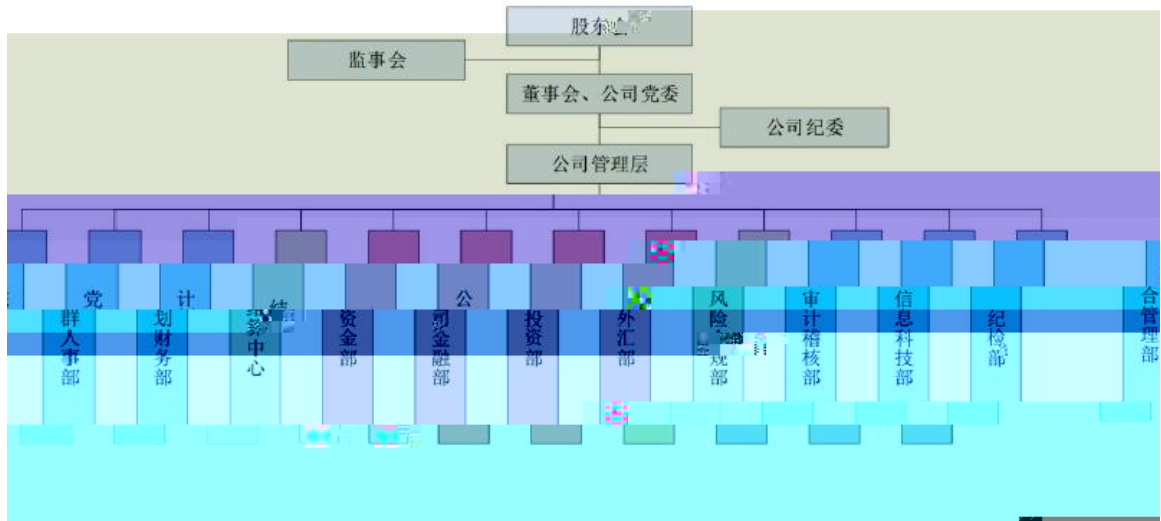


2022

2306C

中船财务有限责任公司



1.

1104

2.

" "

3.

2 505.87 Tm 9 G[]TE00866171741S

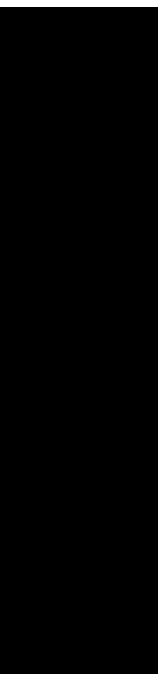
7.

EAST

		2022	12	31		2022
	12				2291.76	
2102.01	31					
				189.75		

	2022 12 31		
1		12.81%	10.5%
2		65.03%	25%
3		41.26%	80%
4	/	0.00%	100%

5



2023 4 25